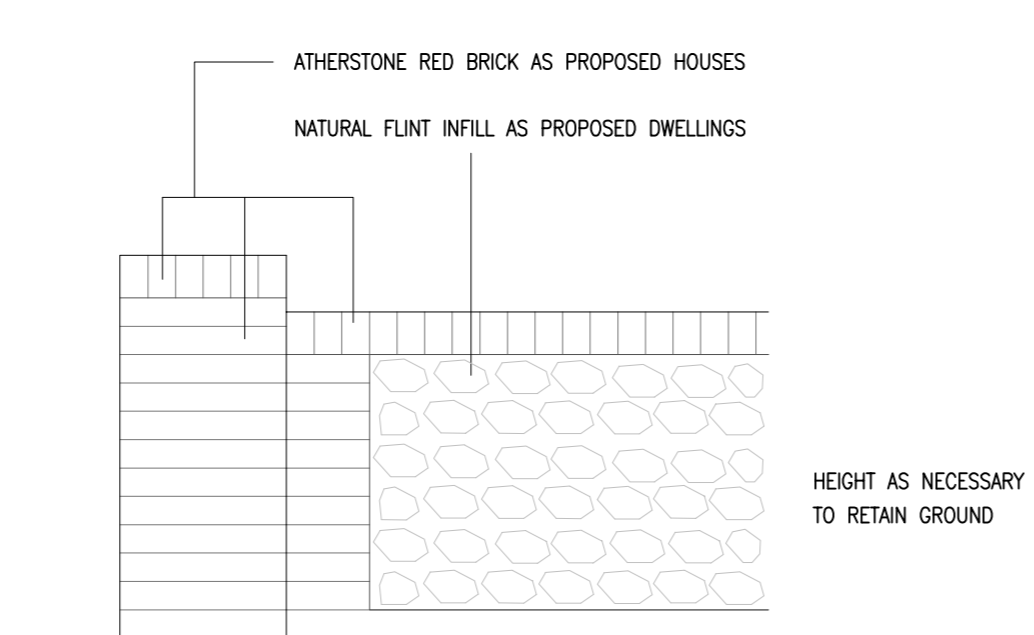
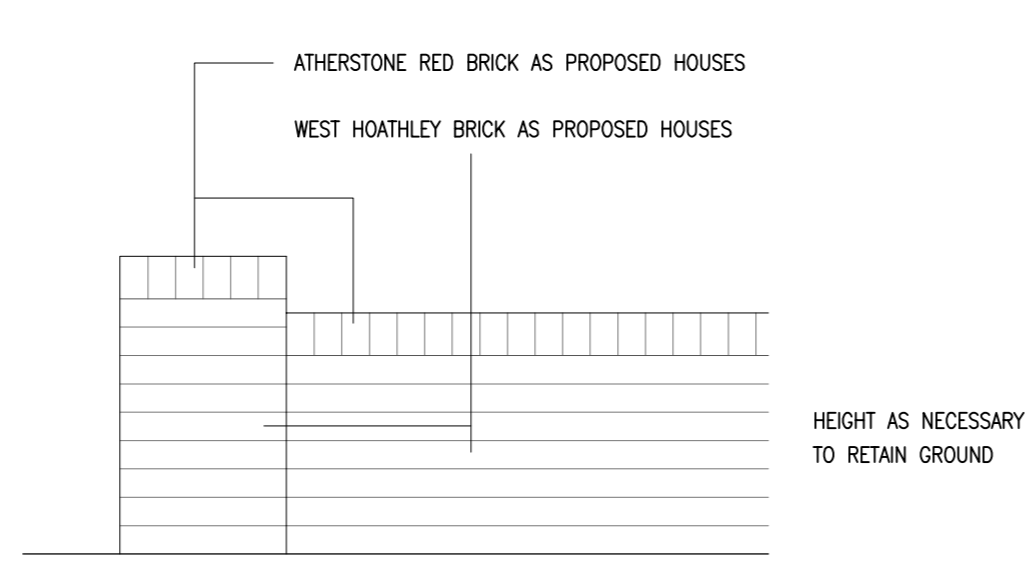
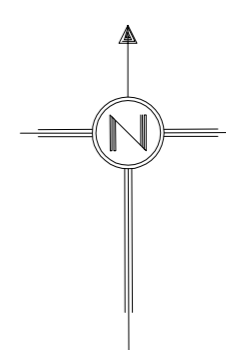


A259 - Eastbourne Road



NOTES / LEGEND:-

- TARMACADAM CROSSOVER & ACCESS
20MM STONE BASE LAYER, 6MM STONE TOP LAYER ON PREPARED SUB-BASE
- 16 TO 20MM STONE PARKING & TURNING AREAS (FULLY PERMEABLE) RAG STONE ON LANDSCAPE FABRIC OVER 250MM DEEP SUB-BASE BETWEEN 150 X 50MM CONCRETE EDGINGS SET IN PLACE. NO DIG AREAS TO ARBORICULTURALIST RECOMMENDATIONS
- INDIAN STONE PAVING RAJ BLEND
PAVING ON NOM. 50MM SAND CEMENT BEDDING ON 150MM PREPARED SUB-BASE
- 215MM BRICK OR BRICK/FLINT GARDEN WALLS WITH 440MM PIERS WHERE SHOWN - SEE DETAILS
- GRASS LAWN
TURF TO PRIVATE GARDEN AREAS, SEED TO COMMON AREAS
- PREPARED SOIL FOR PLANTING BY HOMEOWNERS (PRIVATE GARDENS)
GOOD QUALITY TOP SOIL RE-USED FROM SITE
- AREA LEFT TO NATURE
GROUND INITIALLY CLEARED OF PERNICIOUS WEEDS THEN LEFT TO NATURE
- BANK SLOPE TO SUIT NEW AND RETAINED LEVELS
- RETAINED TREES WITH ROOT PROTECTION AREA SHOWN DOTTED
- PROPOSED NEW TREES AS ARBORICULTURALIST'S RECOMMENDATIONS
- TIMBER FEATHER EDGE FENCING - NOM. 2M HIGH
125 X 100MM POSTS SET IN CONCRETE, ARRIS RAILS & 175 X 25MM GRAVEL BOARDS

